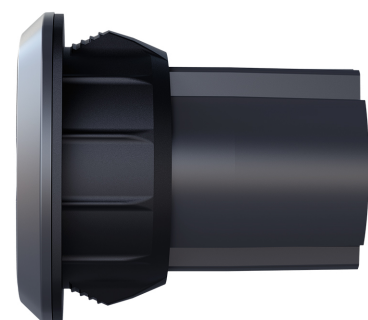
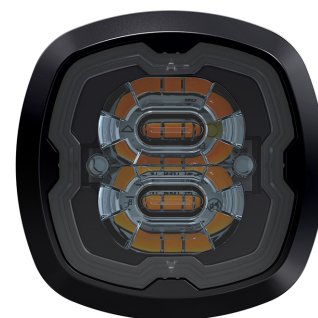
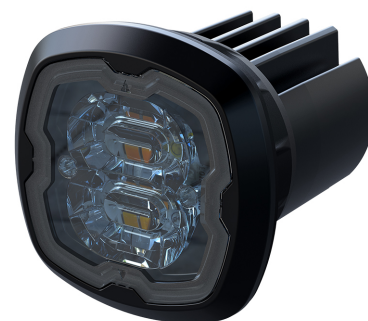


F16S WARNING LIGHT POPNLOCK TINTED R65 CL2

Art.no: 14-F16S

A small directional warning light with tinted lens. F16S is for surface recessed flush mount and has an unique snap on grommet allowing for a quick one-step installation. The light head is pushed into the mounting hole where the grommet locks it into place, pop-n-lock. The light has 17 different flash patterns to choose from where one is approved according to ECE R65 class 2/XA2. F16 has a day/night function and steady burn pattern. Each light head has six intense diodes that provides a powerful and visible warning light. Up to 20 units can be synchronized and each unit has 21 cm cable. Mounting hole diameter is Ø29 mm.



Technical information

Brand	Juluen
Voltage	12/24V
Current	12V/0,81A, 24V/0,41A
Connection	Outgoing cable
IP rating	IP67
ECE Approval	R65klass1XA1
EMC Approval	R10
Color of the light	Orange
Dimensions (LxHxW)	36,6 x 36,6 x 39 mm
Light source	LED
Warranty	5 Year
LED quantity	6st
Weight (kg)	0.060000