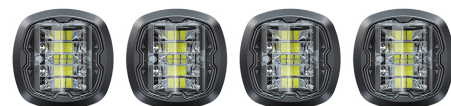


F16 WARNING LIGHT WIDE POPNLOCK

Art.no: 14-016W

A small directional warning light with 120 degree light spread. F16 wide is for surface recessed flush mount and has an unique snap on grommet allowing for a quick one-step installation. The light head is pushed into the mounting hole where the grommet locks it into place, pop-n-lock. The light has 17 different flash patterns to choose from where one is approved according to ECE R65 class 1/XA1. F16 has a day/night function and steady burn pattern. Each light head has six intense diodes that provides a powerful and visible warning light. Up to 20 units can be synchronized and each unit has 21 cm cable. Mounting hole diameter is Ø29 mm.



Technical information

Brand	Juluen
Voltage	12/24V
Effect	10W
Current	0,84A/12V ; 0,42A/24V
Connection	Cable with open end
Cable Length	21 cm
IP rating	IP67
ECE Approval	R65klass1XA1
EMC Approval	R10
Color of the light	Orange
Lens color	Clear lenses
Dimensions (LxHxW)	36,6 x 36,6 x 40 mm
Light source	LED
Warranty	5 Year
LED quantity	6
CC measurement	29 mm
Weight (kg)	0.240000

